



**E-Ink Tab Series**  
**(with stylus )**

**General User Manual**

**V3.5**

**Onyx International Inc.**

**[www.boox.com](http://www.boox.com)**

# Contents

1. Copyright Declaration .....	3
2. Safety Guide .....	4
3. Quick Start .....	7
4. System Functions .....	23
5. ONYX APPS .....	31
6. System Settings .....	112
7. Thank you for your support .....	128

## **1. Copyright Declaration**

---

Guangzhou Onyx International Inc. reserves the right to make changes to the product specifications and contents contained in the Quick Start Guide and User Manual without prior notice.

1. All book images in this manual are for display only, not pre-installed books;
2. Due to different software versions, some functions or interfaces may be inconsistent with the description in the manual. It is subject to the final product.

## 2.Safety Guide

---

Please read the following safety instructions before use. If you encounter any technical difficulties, please contact your BOOX retailer, or call the official after-sales hotline at 4008-400-014 or 4008-860-830 for assistance.



### **Fragile Screen Protection**

The E-ink screen is very fragile. Please do not directly hit, squeeze, oppress the screen, or drop it from a high place onto a hard surface. If the display screen is broken, please stop using it and contact our customer service or other qualified professionals for replacement. Do not disassemble and replace it by yourself.



### **Qualified Accessories**

Only batteries, chargers and other accessories that meet the safety standards of this equipment are allowed to be used. For details, please refer to the product specifications.

Use of incompatible accessories will result in damage to the device at your own risk.



**Keep away from strong magnets\static electricity**

Please keep away from strong magnetic and electrostatic environment to avoid abnormal writing on the electromagnetic screen or damage to other electronic parts.



**Keep away from liquids**

This device is not waterproof. Do not expose it to a humid environment or use it in the rain. Please keep it away from any corrosive liquids.



**Do not dismantle the device**

The battery of this device cannot be replaced. Please do not disassemble it by yourself to avoid damage to the structure or screen.



## Using environment

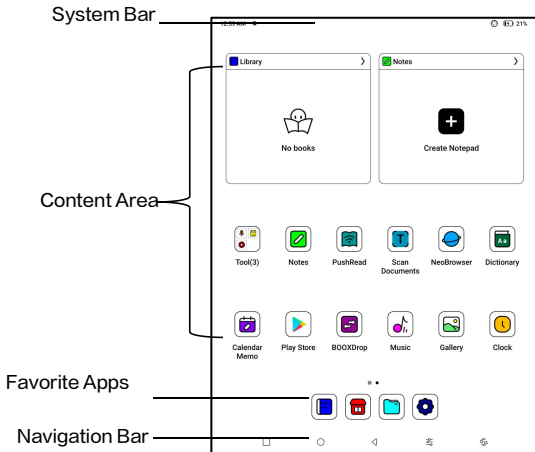
The environment temperature range of using this device is 0° C–50° C. Please do not use it continuously in high temperature or low temperature environment.

We are not responsible for the damage or loss of data in the equipment caused by human abnormal operation or unexpected circumstances, nor for other indirect losses caused thereby.

If you need to return to the factory for repair, please back up important data by yourself. We are not responsible for data loss caused by repairing or replacing parts or updating the system.

# 3.Quick Start

## 3.1 Home Screen



### System Bar

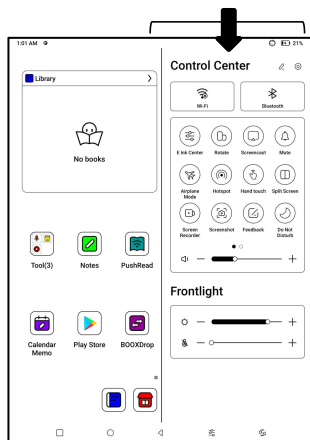
The area displays the current status of the device, including Time, Notifications, Refresh Mode, Wi-Fi, battery status, etc.



## Control Center

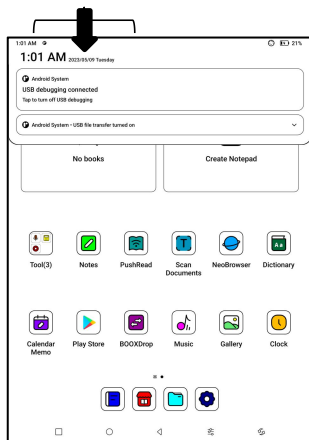
Pull it down from the right top edge or tap to expand.

Tap the “Edit” icon on the top to edit the functions for the center.



## Notification Center

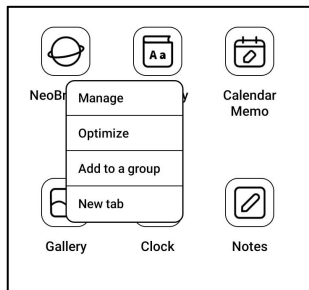
Pull it down from the left top edge or tap to expand.



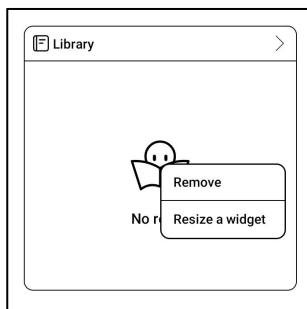


## Content Area

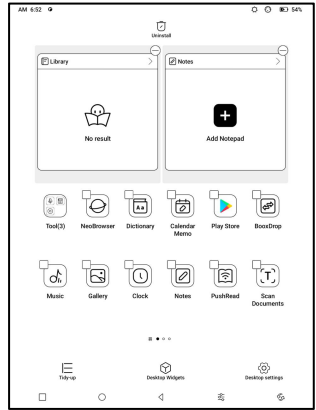
Tap and hold an app to move it around on the screen, uninstall it, optimize it, add it to a group, or access some quick functions supported by the app.



Tap and hold a widget to move it around, remove it, or resize it (The widget is required to support different sizes)

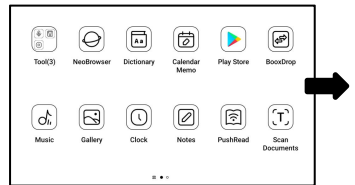


Tap and hold a blank area for 2 seconds to enter desktop editing status. Tidy up apps on the screen, add widgets to desktop, and manage desktop settings.



## Add Desktops

After the current desktop is full, a second desktop will be automatically added when a new app is installed. You can also long press and drag any icon to the next page manually.



## Favorite Apps

Long press an app to drag, add, and remove. Up to 6 apps can be added.



## Navigation Bar (Default)

Four combination options available. You can choose your preferred option.



C1: Back / Home Screen /

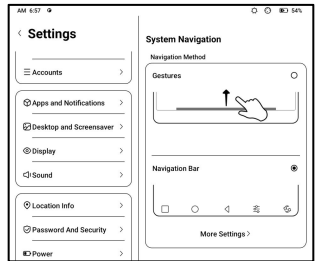
Multitask / E Ink Centre/ Full Refresh

C2: Multitask / Home Screen / Back / E Ink Centre / Full

Refresh

# Gestures

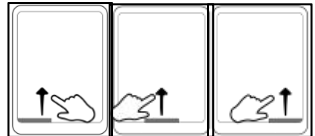
Go to Settings/ System Navigation to change to navigate by Gestures.



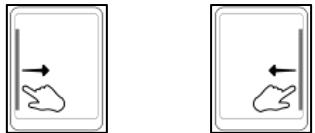
## Customize Gestures

Bottom (Default:)

Multitask, Home Screen, E ink Centre



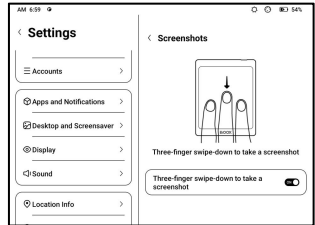
Sides (Default): Back



Customize the gestures to your own preferences.

## Other Gestures

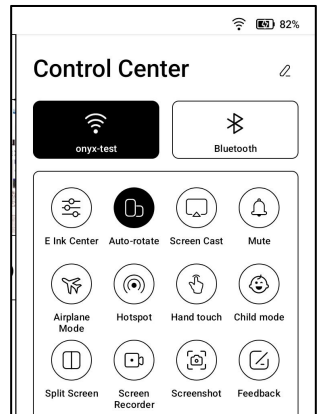
Swipe down with 3 fingers to take a screenshot. This gesture is enabled by default. You can go to Settings / System Settings / Screenshots to disable it.



## 3.2 E-ink Center (App Optimization)

It can be called from the Control Centre or swiping up from the bottom.

This function is mainly used to optimize the display effect of third-party apps .



## Refresh Modes

You can preset different refresh modes for different apps, or change later.



**HD:** Good display effect, suitable for general text reading.

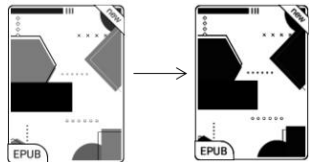
**Balanced:** Heavier ghosting, suitable for quickly skimming through images and text.

**Fast:** Heavy detail loss, suitable for browsing webpages.

**Ultrafast:** Heavier detail loss, suitable for playing videos.

## Dark Color Enhancement

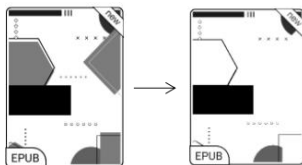
This function turns darker colors to black and is generally used for enhancing foreground colors, or



light-colored pages, such as colorful icons, and low-quality scanned PDFs.

## Light Color Filter

This function turns light page colors to white and is normally used to whiten the background colors.



## More Settings

Customize more optimization settings for a better user experience by going to E Ink Center/ App Optimization or long-press an app' s icon to choose “ Optimize” .

# Display

**DPI:** Adjust the overall interface size and its default value is 350.

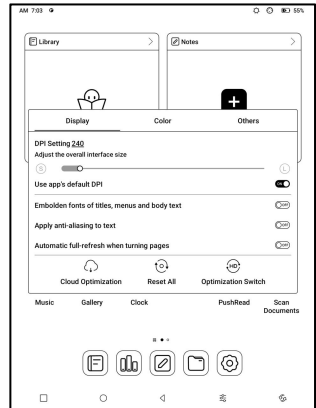
If some apps (such as Kobo) are adjusted to the minimum value and the edges are still cut off, please switch back to the original DPI value of the apps.

**Anti-aliasing:** Make the text edge sharper

**Cloud Optimization:** Some apps have been optimized for better performance. Obtain the optimization with just one click after connecting to the internet.

**Reset All:** All optimization settings will be reset.

**Optimization Switch:** The main switch. After it is turned off, some optimization effects will be canceled, but the configuration will not be reset.





## **Color**

### **Add strokes to text**

Some text may be invisible due to the background bleach.

Add strokes to text can make the text visible again.

Recommended value: 1.

### **Background Color**

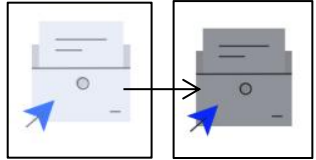
This is to bleach a large area of the background color. It is recommended to use this setting together with text enhancement and Icon Colors. Otherwise, the text and small icons on the background will not be visible.

### **Icon Color**

Generally, this is to darken the colors of some small colorful icons in the menu.

## Cover Color

Generally, this is to darken the colors of large cover-style icons.



## Webpage Text Size

This is for the embedded WebView interface. When the DPI adjustment is invalid, you can try to adjust the font size of the webpage

## Webpage Text Color

When bleaching does not work, you can try to adjust the webpage colors.

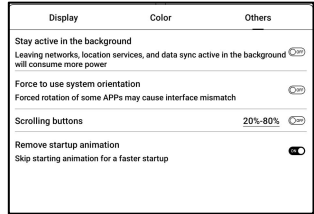
## Embolden Webpage Text

When some fonts cannot be emboldened, you can try to embolden the webpage text.

## Others

### Keep apps active in the background

This is for the apps that are continuously running in the background, such as Alarms, Notifications, Download. You can stop the apps running.



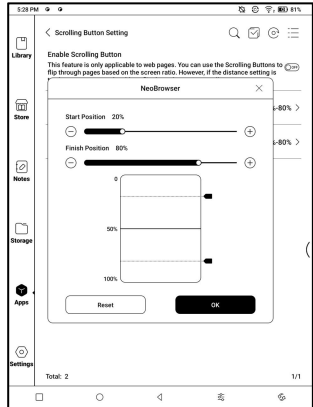
### Force follow system direction

Some APPs lock the direction. When the system rotates, if the APP cannot follow the rotation, forced rotation can be used;

Forced rotation may cause some interfaces to fail to display normally, which is related to the design of APP. For such APP, it is recommended to turn off forced rotation and use the original direction;

## Scrolling Button Setting

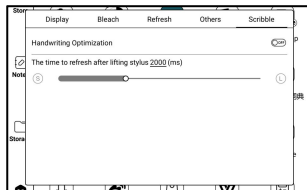
You can go to the Scrolling Button Setting page from App Management (Tap the Menu bar on the upper right corner on the Apps homepage) or Navigation Ball settings.



When enabled in third-party apps, the Scrolling Buttons can be used to turn pages. Based on the actual situation of the page, you can set the required starting and ending positions to avoid inconsistent or partially duplicated content after turning a page. It is recommended to set the starting and ending positions between 15% and 90% of the screen. A range that is too large may make it difficult to turn pages effectively while a range that is too small may result in excessive repeated content.

## Scribble (Only support some apps)

This setting is only applied to apps with handwriting functions and is to optimize the handwriting speed. Currently it only supports apps including OneNote, Evernote, and WPS.



Refresh time after lifting stylus:

The time to refresh after lifting stylus: The handwriting will be refreshed in a set time after you stop writing. The refresh applies to the app's settings such as types, width, and pressure sensitivity.

When refreshing handwriting is in progress, you cannot continue writing. You can continue writing after the refreshing is done.

When refreshing handwriting, you cannot continue writing, please continue to write after refreshing;

If you want less interruption by the refreshing, you can set the refreshing frequency longer.

Hand touch may cause interruption to handwriting. You are recommended to disable hand touch to reduce accidental touch on the canvas to cause problems.

## 4. System Functions

---

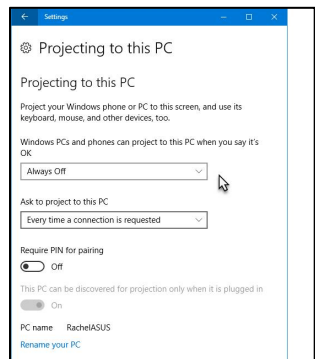
### 4.1 Screen Cast

4.1.1 This feature supports Windows 10 or above. It does not support Win 7/XP and MacBook.

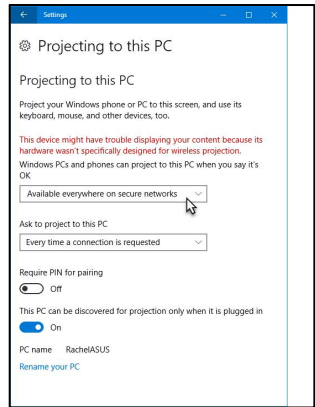
4.1.2 Please make sure your computer supports the Screen Cast function. You can check it in the computer system: System / Projecting to this PC

Please be aware that there are 4 settings that will affect the results of searching the computer on your BOOX and the confirmation of connection request.

The computer supports  
Screen Cast



The computer does not support  
Miracast /Screen Cast



4.1.3 Please make sure that your computer and BOOX are connected to the same wireless network.

If your desktop computer connects Wi-Fi via Wireless Network Card, please check whether the step2 is supported.

Some computer configuration and wireless network cards do not support this function.

4.1.4 On your BOOX, select Screen Cast from drop-down Control Center. Then the automatic search will start. The



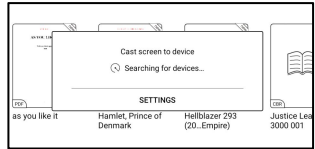
computer name will be shown when found.

#### 4.1.5 Select the found computer

in the search window. If there

are multiple computers, select

the computer that you want to project to from the list.



#### 4.1.6 After you select the computer that you want to project to

to, your computer will pop up a notice to ask whether to

accept the projecting request.

#### 4.1.7 After you accept it, your

BOOX and computer will

automatically connect to each

other. And the Screen Cast is

successful.



If the "Unable to view protected



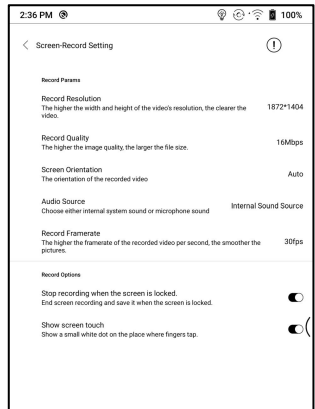
content on this device" appears on the screen, the connection may be unsuccessful. Please disconnect the device, and request the Screen Cast connection again.

4.1.8 When your BOOX and computer are connected, please tap Screen Cast again from Control Center, then select "Disconnect" . Your computer cannot disconnect the connection.

If your computer support Screen Cast but cannot receive the request, please restart your computer and try to connect again. Please also check whether your computer's setting is to reject the request. (See Step2).

## 4.2 Screen Recording

Long press Screen Recording icon to go to screen recording settings. You can customize Resolution, Recording Quality, Screen Orientation, Audio Source, Recording Framerate, etc.



If you use Screen Recording for the first time, you are recommended to adjust the relevant settings first.

Tap Screen Recording icon to enter recording widget. Tap the Start icon to start recording and tap the Close icon to stop recording.

After recording is done, there will be a thumbnail enabling you to play or share the recorded video.

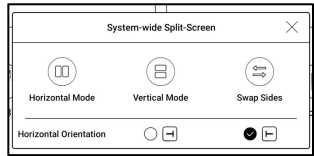
Tap and hold the recording widget to drag it around. The recording widget will not be recorded into the video.

After the Screen Recording is enabled, the recording widget will be floating on the screen all the time. You can create different recordings. Tap X to close it completely.

The recording format is MP4. The save path is  
Storage/Movies/Captures

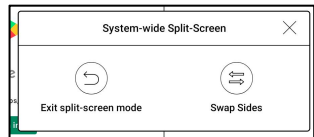
## 4.3 Split Screen

When an app is open, choose Split Screen from Control Center to initiate the function. The Split Screen supports docs, Notes, and other apps. The Split Screen cannot be initiated from system interface.



**Note:** Whether an app support Split Screen is subject to the app itself. If the app does not support Split Screen, please get in touch with the developer.

In Split-Screen mode, the newly opened app is the secondary screen. You can choose to swap sides and exit the Split Screen mode.



In Split-Screen mode, only the app on the main screen support Refresh settings and the refresh setting does not take effect on the secondary screen.

In Split-Screen, Display settings take effects on both apps.

## 5. ONYX APPS

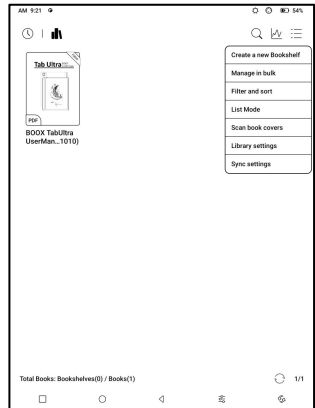
---

### 5.1 Library

The Library only shows the supported formats. Cover Mode is used by default. All eBooks are sorted by Time Created.

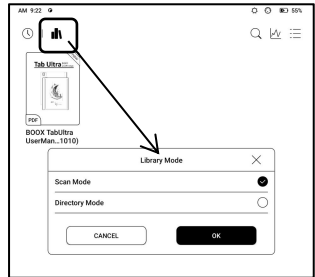
On the upper right corner of the Library, you can search books, create bookshelves, manage books in bulk, check Reading

Statistics, filter and sort, switch between Cover and List modes, scan book covers, manage sync and Library settings.



## Library Mode

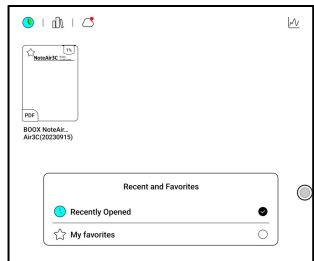
By default, the Library is in Scan Mode, which automatically scans all supported files under specified saving paths. Tap the icon to switch to Directory Mode which displays all supporting documents according to the directory structure in the Storage.



## My Favorites

Tap the ☆ symbol on the book cover to add the book to your Favorites.

Tap Recently Opened icon to switch to My Favorites

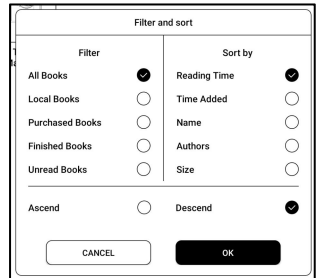


The old “Pinned” function was removed



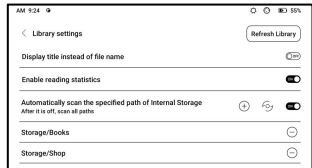
## Filter and sort

Apply to all eBooks by default and sort by the recent reading time in descending order;



## Library Settings

You can choose to display title instead of file name, enable/disable reading statistics, or choose scan path.



The default scan path is: Books and shop in Storage. You can customize the scan path and choose to auto-scan the specified path.

Note: In the following case, some documents will be removed from the Library after the Library is refreshed. You

can check the source files from the saving path.

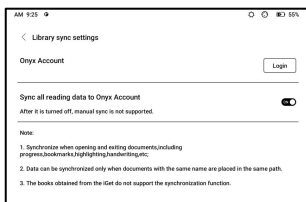
1. Documents opened directly from other non-scanning path in Storage.
2. Documents that are not in the default scan path after the default scan path is modified.

## Sync settings

You can sync reading progress and data across devices via Onyx Cloud. The feature is on by default. If you do not want to sync

your reading data of all documents, you can turn this feature off.

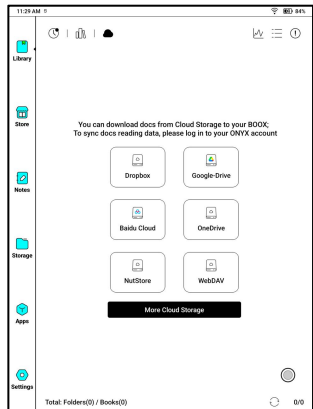
If you do not want to sync the reading data of some documents, long press their book covers to go to Sync Settings, and turn their sync off individually.



**Note: Currently, only reading data can be synced to the Cloud. The source document cannot be synced to the Cloud. You need to add documents to the same path on different devices for the sync.**

## Cloud Storage

After binding a third-party Cloud Storage, you can download documents from the Cloud Storage to your device, but uploading documents from your device to the Cloud Storage is currently not supported.



After embedding data to PDF documents, you can upload the PDF documents back to the original folder in the Cloud Storage. Other formats currently do not support this feature.

To sync reading data, please log in to your ONYX Account.

## Bind WebDAV

Please refer to the binding introduction of each Cloud Storage because different Cloud Storage providers may use different login methods.

For example, NextCloud requires you to create an

app-specific password on their website, which is used for authorization to log in.

2:44 PM

WebDAV

WebDAV website

Account

Password

Create an App password:

Recommended NextCloud. Please refer to the binding process on their respective web pages.

Take NextCloud as an example, the account binding process is as follows:

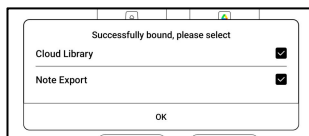
1. On the NextCloud web page, log in to your personal account, and you can find the WebDAV address of your personal account in the main interface of File - Settings;
2. Click the account avatar-Settings-security Device and activity link, enter any desired name, and click create new app password, which is the authorized application password. This password will only be displayed once when it is created. Please save it safely and bind it. Use it when setting up an account.
3. For more instructions, see: [https://docs.nextcloud.com/server/20/user\\_manual/en/files/access\\_webdav.html](https://docs.nextcloud.com/server/20/user_manual/en/files/access_webdav.html)

Binding account:

1. On the binding interface, enter the WebDAV address, account, and created App password to complete the binding;
2. If the authorization is revoked on the web page, the device will automatically log out, and you need to re-apply for the App password and binding before continuing to use it.

## Choose Functions after Binding Cloud Storage

Some Cloud Storage services support both book downloads and notes exports. After binding



a Cloud Storage account, you can choose the function you need.

## Bind multiple accounts

A Cloud Storage service supports binding multiple accounts. Books downloaded with a specific account will be stored in a separate sub-bookshelf.

## Sub-bookshelf for Cloud Storage

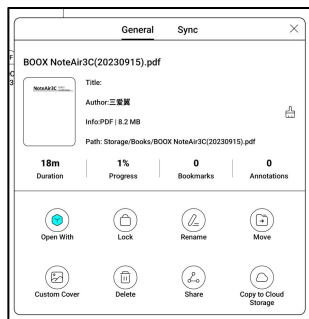
When a Cloud Storage account is bound, a sub-bookshelf will be automatically created when you download books for the first time. All downloaded books from the same Cloud Storage account will be automatically placed on this sub-bookshelf.

The sub-bookshelf only includes supported book formats. Please be aware that other types of files downloaded from the Cloud Storage may not be viewable. Please delete their local files if not supported.

If you do not need the sub-bookshelf, you can disable it from Cloud Storage Settings. After it is disabled, the downloaded books will be added directly to the Library.

## Uploads files to Cloud Storage

You can manually upload local books on your BOOX to specific Cloud Storage. Long press the book cover in the Storage or Library, then select Copy to Cloud Storage.



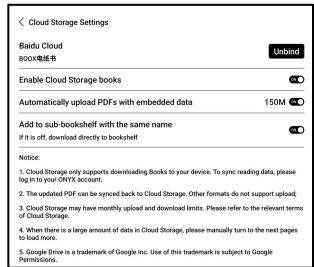
Auto-upload is currently not supported

## Cloud Storage Settings

PDF documents can be automatically uploaded after you exit the documents. The upload speed is limited by the network speed and Cloud Storage speed limit. It is not recommended to upload larger documents frequently. Instead, you can manually upload them when needed by long-pressing the cover and selecting manual upload.

After logging into the Cloud Storage, you can set the automatic upload size of PDF documents in the Cloud Storage Settings, with a default size of 150MB and a maximum size of 300 MB.

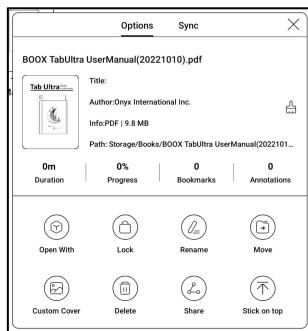
Some Cloud Storage may have monthly quota limits. If you encounter errors such as being unable to download or



upload, please check for network issues first, then confirm with the Cloud Storage providers whether they have a limit quota.

## Book Property

Long press a book cover to check book-related information, including title, author, format, size, reading progress, book details, Open with, Lock, Rename, Move, Custom Cover, Delete and Share.

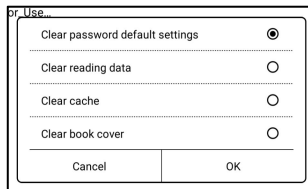


Saving path: tap the saving path to jump to the actual saving location.



## Clear settings

You can clear password, reading data, cache, and book cover.



## Clear password default settings

Only clear the default settings of locked documents or documents with their own passwords, and will not clear the relevant passwords.

## Clear reading data

All personal data of the selected book will be cleared. The data cannot be recovered after being cleared.

Please perform this action carefully!

## Lock

Add locks to documents (reading passwords) to protect personal reading data. The password is used to open books in NeoReader. When the documents are exported or copied to other devices or other apps, the password will not be valid anymore.



The screenshot shows a dialog box titled "Add Password". It contains two radio button options: "Use Fingerprint Password" (which is selected) and "Use Numeric Password". Below these are two text input fields: "Please Enter Password: Please enter a 4 to 8 digit" and "Confirm Password: Please enter the Password ag". A checkbox labeled "Use this Password Setting by default" is checked. At the bottom, there is a "Notice: The Password cannot be reset without login of Onyx Account ( Mobile or E-Mail)." and two buttons: "Cancel" and "OK".

The digital password only supports setting one password. After setting the digital password for the first time, you do not need to set it again if you use the digital password for other documents. You only need to add locks to other documents.

The reading password cannot be retrieved. If you forget your reading password, you can only reset the password through Onyx Account (only Mobile phone and Email login

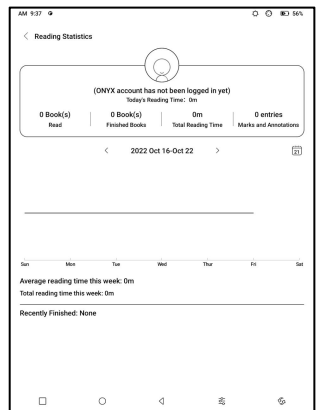
methods supported).

If you use this password by default, you can add password directly to other documents after setting it for the first time.

In this case, you do not need choose to add locks every time.

## Reading Statistics

This summarizes your personal reading statistics, including Today's Reading Time, Read Books, Finished Books, Total Reading Time, Marks and Annotations.



Average reading time this week is based on 7 days and calculates the average daily reading time within this week.

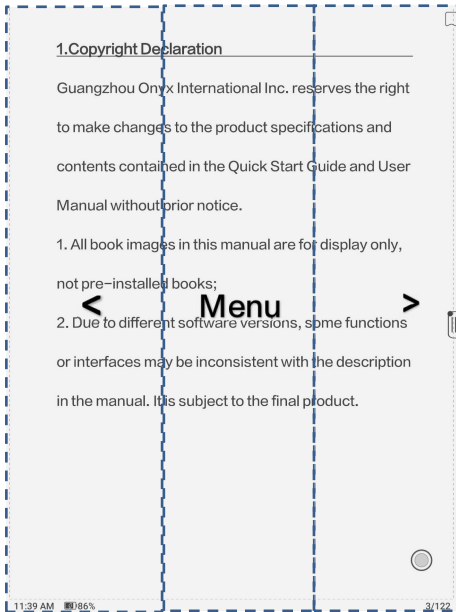
Tap Marks and Annotations to jump to My Annotations page and tap any book under Recently Finished Books to open the book.

If you do not want to use reading statistics, you can turn it off from Library Settings. After it is off, the reading statistics icon in the Library will not show anymore

## 5.2 NeoReader

Tap the center of the screen to bring up the reading menu.

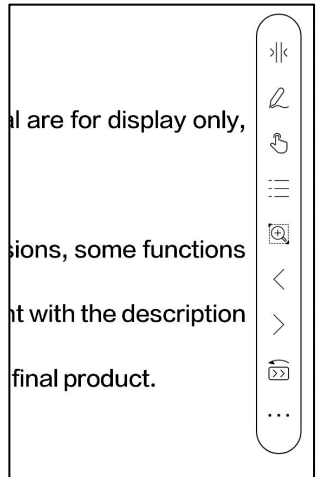
You can switch between multiple documents, and select related functions.



## Floating Toolbar

By default, the Floating Toolbar is collapsed to the right edge.

When it is expanded, long press the Toolbar to drag it to anywhere you want on the screen. It can be collapsed to the sides to avoid covering text during reading. When needed, swipe left or right from the screen edges to call it out.

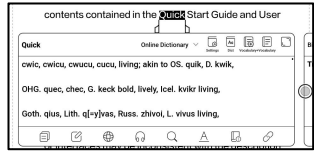


When using zooming and columns in PDF, automatically add the Panning icon and Reset icon(both are off by default) to help you manage the zoomed-in document.

When a page is divided into several columns, single tap to turn each column and tap the Virtual Buttons to turn the whole page

## Select a word

Long press a word to call out the dictionary dialog box. You can switch between different

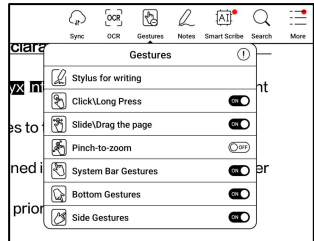


dictionaries. Select the one you want from the dropdown list.

This function requires you to install dictionaries. If you haven't installed a dictionary, you cannot look for words. Tap any area outside of the dictionary dialog box to exit it.

## Gestures

This is convenient for dual-touch models. When using a stylus to write, you can disable certain gesture action to reduce the interference with writing.



## OCR

Only support images on formats including PDF、CBR、CBZ、DJVU、PNG

Recognize one page at a time.

Selecting the right layout (horizontal or vertical layout) can improve recognition accuracy. After recognition, long press any text to add marks or look up dictionaries.

If some recognized text is not accurate, you can correct the text in the annotation dialog box (This does not change the original text in the image)

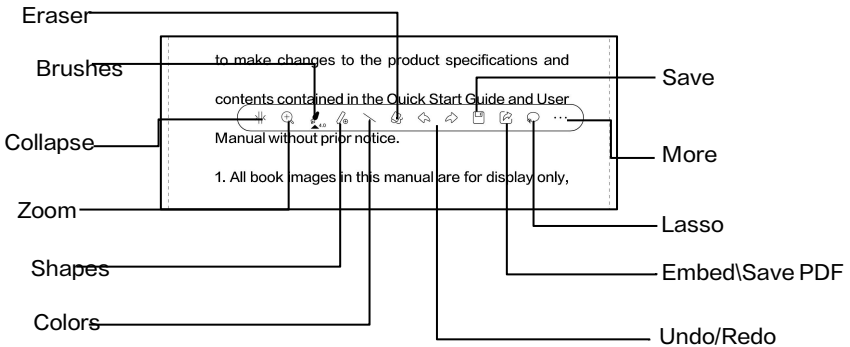
Check all recognized pages from Contents/Bookmarks where you can quickly locate and jump to the relevant pages. Tap the OCR icon on the upper right corner to clear OCR content.



# Handwriting Toolbar

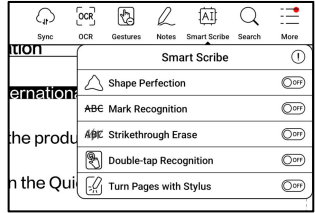
The handwriting Toolbar is floating on the screen. Long press it to drag it around. Handwriting status is by default.

You can disable and enable it from the reading menu on the top. Bring out Handwriting Toolbar from the Floating Toolbar. You can collapse it.



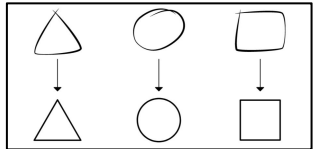
## Smart Scribe

It can intelligently convert some handwritten content into standard graphics, erasure, or text.



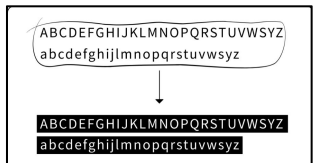
## Shape Perfection

Pause for 1 second on the screen after completing the shape drawing, then lift the stylus after the shape is perfected.



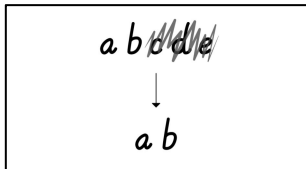
## Mark Recognition

Drawing underlines or circles over text will be directly converted into highlights.



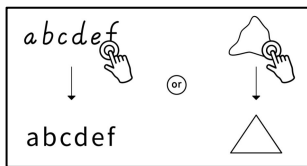
## Strikethrough Erase

Quickly draw vertical lines over any handwritten content, the content will be erased after you lift the stylus. It is not applicable to a blank area.



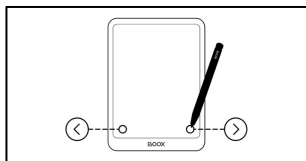
## Double-tap Recognition

For handwritten notes and drawn shapes, double-tap onto the handwriting, which will be converted to printed text and standard shapes.



## Turn pages with stylus

When palm rejection is enabled, you can enable this feature from Settings/ Handwriting



Recognition Setting. After it is enabled, you can turn pages by tapping the lower left and right corners using your stylus.

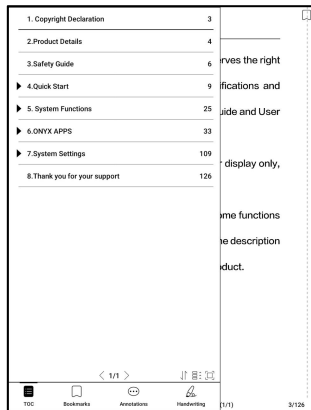
## Reading Menu at the bottom (PDF)

The menu includes Contents, Progress, Format, Contrast, Navigation, and Split View

### Contents

This section includes TOC, Bookmarks, Annotations, and Handwriting.

TOC supports a 3-level structure. The current page is underlined in the TOC. Tap each content to jump to the corresponding page. Tap any area outside of the Contents interface to exit.



1. Copyright Declaration	3
2. Product Details	4
3. Safety Guide	6
▶ 4. Quick Start	9
▶ 5. System Functions	25
▶ 6. ONYX APPS	33
▶ 7. System Settings	109
8. Thank you for your support	126

## Bookmarks

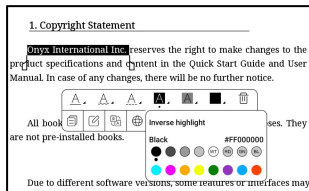
When reading a book, you can tap the Bookmark icon on the upper right corner to bookmark the current page. Tap the icon again if you want to un-bookmark the page.

Check all bookmarks at Contents/Bookmark. Tap each bookmark to jump to the corresponding page. You can also delete bookmarks here.

## Annotations

All highlighted, underlined, and annotated contents are shown in Contents/Annotations. You can check, edit, and delete all relevant content here.

After selecting the text, you can choose colors to highlight and underline. This feature is more suitable for color E Ink models.



Black and white models cannot distinguish colors, but the colorful highlights and underlines can display their original colors when exported to other devices.

Some darker colors may cover text completely. Please select suitable colors for highlights.

Tap each content to jump to the corresponding page. All contents under Annotations can be exported in txt format. The default saving path for the exported contents is Storage/ note/ a file with the same name as the original document. You can also export the contents to a third-party notes app. Go to System Settings/Accounts to bind third-party apps(Currently Dropbox is supported).

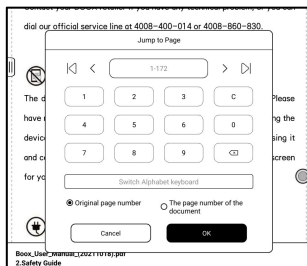
## Handwriting

All pages with handwritten notes are shown in Contents/Handwriting. You can check and delete the relevant pages. Tap each page thumbnail icon to jump to the corresponding page. All pages with handwritten notes can be exported in PNG images. The default saving path for the exported contents is Storage/ note/ a file with the same name as the original document.

## Progress

Here it shows a chapter name of the current document (if no chapter name, the document name will be shown), progressing page number, Previous/Next chapter, page number, Automatic Page–turns, Redo and Undo, etc.

Tap the page number to pop out the Jump–to–page dialog box. Enter the page number that you want so as to jump to the

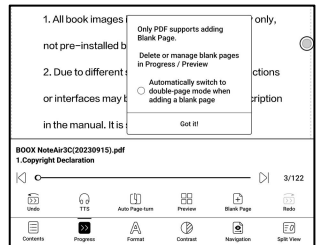


relevant page.

You can search the built-in page numbers of PDF documents. (The custom page numbers)

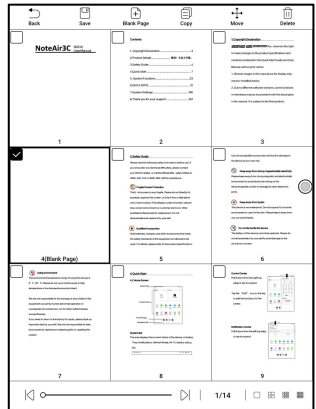
## Add Blank Page in PDF

When reading a PDF doc, you can add a blank page by going to Progress/Blank Page. This makes it convenient to add more notes. When adding a blank page, you can choose whether to switch to double-page mode automatically for side-by-side referencing.



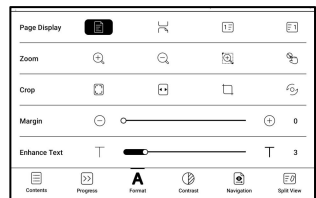


You can view and manage the added blank pages from Progress / Preview. The original pages are not supported for deleting and moving.



## Format

**Page Display:** switch between single-page mode, dual-page mode 1, and dual-page mode 2. The dual-page mode only supports a landscape screen.



**Zoom:** You can zoom in/out the whole page, zoom in the marquee area, or pinch-to-zoom any area you want.

**Crop:** Tap relevant functions to automatically crop all blank areas, or blank areas only on the left and right, or the marquee area.

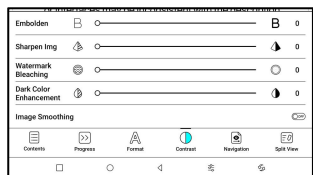
**Margin:** This is for the margin you want to keep for automatic crop. You can adjust it to the size you want.

In zoom-in status, when the zoomed-in page exceeds the screen area, you can drag the page around to check different areas. A single tap only turns sub-pages. Tap the Virtual Buttons to turn the whole page.

## Contrast

**Embolden:** only embolden text  
in PDF

**Sharpen Img:** Make blur image



sharper

**Watermark Bleaching:** Bleach the light-color images or background on the page

**Dark Color Enhancement:** Adjust for the whole page or only the text, making the display darker;

**Image Smoothing:** Optimize the display effect of pictures with gradient colors;

## **Navigation**

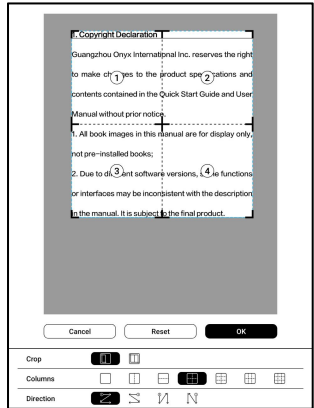
This section includes Comic Mode, Article Mode, Reflow, and more custom settings. You can crop a scanned PDF, divide it into columns, and set its browsing orders.

## Navigation / More

**Crop:** You can manually crop the blank margin in either single-page or dual-page modes.

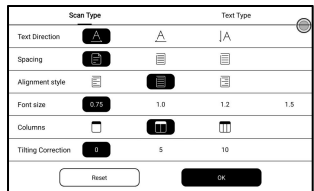
**Columns:** Divide the current doc into different columns

**Direction:** Set the reading order of the divided columns



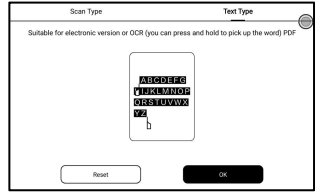
## Reflow

Only apply to PDF\DJVU\CBR\CBZ in scanned version and text-based version.



## Reflow scanned documents

You can adjust Text Direction, Spacing, Alignment, Font Size, Columns, Tilting Correction.

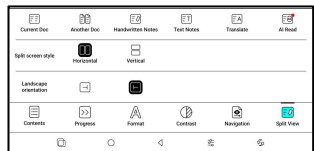


Reflow text-based documents

Apply to digital or OCR'd PDF. After being reflowed, the document can use flow-document functions.

## Split View

You can choose to split horizontally or vertically. There are multiple splitting options available:



**Current Doc:** Open the current Doc only

**Another Doc:** Open the current Doc + a different doc

**Handwritten Notes:** Open current Doc + Handwritten Notes

**Text Notes:** Open the current Doc + Text Notes

**Translate:** Open the current Doc + Full-Text Translate

**AI Read:** AI-powered reading assistance that can summarize documents or specific chapters based on various requests.

Note: All content is generated by AI algorithms and is only provided for reference. It should not be considered a standard answer.

## **Reading Menu at the bottom (Free Flow Documents)**

The menu includes Contents, Progress, Format, Contrast, and Split View and supports free-flow formats such as EPUB\TXT\MOBI\AZW3

## **V2 Engine**

Some free-flow formats such as

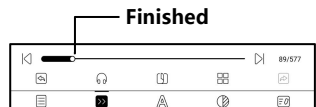
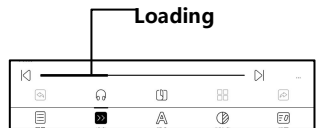
ePub\Mobi\azw3\txt\word\jeb\html use V2 Engine by

default. You can go to reading Settings / Other settings to change to NeoReader.

V2 Engine supports the original layout of the document, including font, line spacing, margin, graphic typesetting, indentation, etc. When being switched to V2 Engine, the document will be closed automatically. Next time when you open the document again, V2 Engine will be used. If you want to switch to NeoReader, you can disable V2 Engine and reopen the document.

## Progress

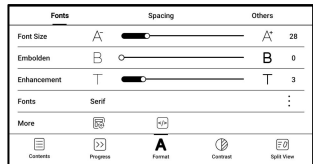
The document needs to be paginated again after switched to V2 engine or font and spacing adjusted. You can check the pagination progress in the reading Menu/Progress. After the progress bar is loaded, it means the pagination is



completed. You can drag the progress bar or jump to another page after the pagination is completed.

## Format

**Fonts:** You can import your own fonts to use. Save your fonts to Storage/fonts. When you open a document, the fonts will be



detected. The settings such as font size, typeface, contrast, bold, spacing only work on the newly opened documents but do not work on the documents opened before the settings.

If you want to restore the original format of the document, you can tap the Restore Original Format icon.

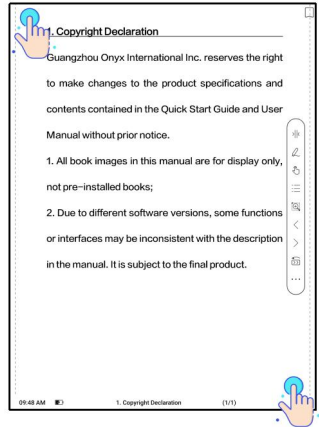


## Screenshot

Tap the two corners (shown in the pic) on the screen at the same time to take a screenshot (PNG format). This function is only available on the reading page.

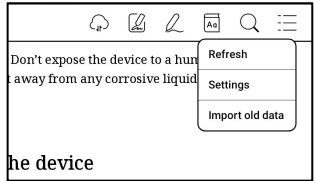
The screenshot can be saved to local storage, shared by

scanning QR code and other means. The local saving path is Storage\Screenshots

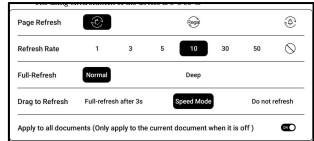


## Refresh

Tap the hamburger menu on the upper right corner to choose Refresh settings.



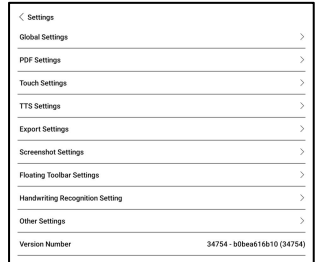
When you drag a page, speed mode is used by default.



Deep full-refresh is recommended for documents with a lot of images and darker background to reduce ghosting during reading.

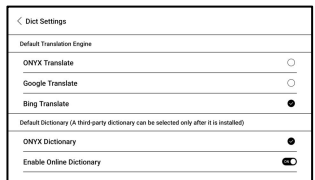
## Settings

Tap the hamburger menu on the upper right corner to go to reading-related settings such as Global Settings, PDF Settings, Touch Settings, TTS Settings, Export Settings, Screenshot Settings, Floating Toolbar Settings, Handwriting Recognition Setting, Other Settings, and Version Number.



## Dictionary Settings

When looking up words in the Dictionary, ONYX Dictionary and ONYX Translate are used by default.



You can select another Translate or third-party Dictionary app as the default choice (Third-party apps require installation first).

If you choose a third-party dictionary, the word lookup interface will use the third-party dictionary interface instead. You cannot use other features provided by ONYX's word lookup function.

### Online Dictionary

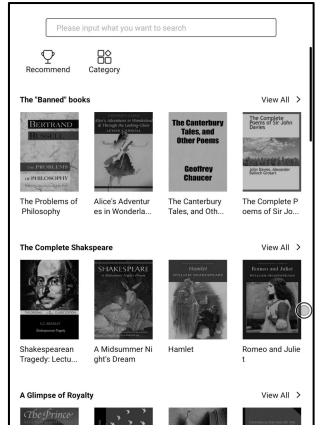
When the device is connected to the internet, you can directly use Online Dictionary directly to look up words.

You can use it without installing local dictionary files, and it currently supports Chinese and English.

Different network environments will affect the overall speed of word lookup. If the network is consistently poor, you can turn off Online Dictionary in the Dictionary settings and use local dictionaries instead.

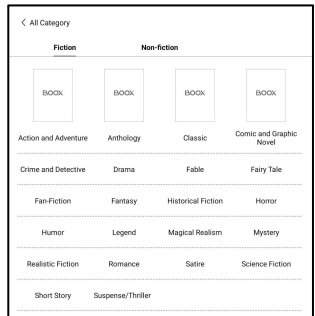
## 5.3 Store

In the language of non-Chinese, the Store is offering free publications E-books from the Internet.



## Category

Books can be screened according to different categories.



## Book Detail

Click a book cover to open up book detail. The specific book information. Click “Full Edition Download” to download the book, then you can see this book cover in Library .

The screenshot shows a book detail page for "The Prince" by Machiavelli, Niccolò. At the top left, there is a back arrow and the text "Book Details". Below this is a book cover for "The Prince" featuring a portrait of a man. To the right of the cover, the title "The Prince" and author "Machiavelli, Niccolò" are displayed. Below the cover and title is a button labeled "Full Edition Download". Underneath the button is the text "Introduction:" followed by a copyright notice "© Copyright". Below the copyright notice is the section "Book Recommendation" with a link to "Another batch". The recommendations are displayed in a grid of book covers with their titles: "Herakleitos", "The American Indians", "Historias de Filipinas Principes", "Lips Tulian und seine Baude...", "The Glöed Age", "Invaders from the Infinite", "The Last of the Bushrangers... Detective", "Anderson Crow, Detective", "Camilla", and "英荷一役の歴史 (紀伊藩)".

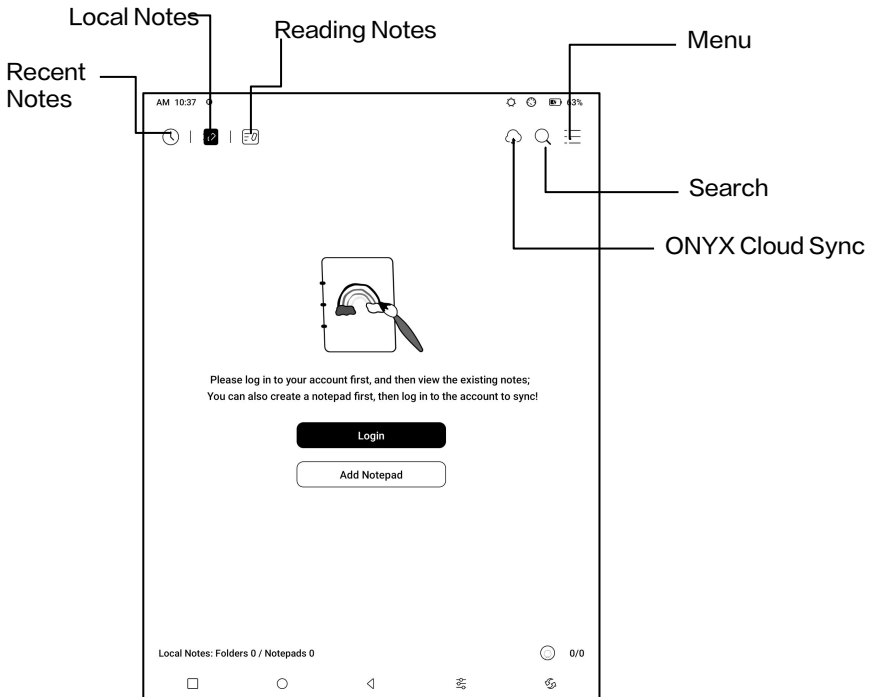
## 5.4 Notes

This interface includes Recent Notes, Local Notes, and Reading Notes.

Recent Notes: Display 12 recently opened notepads

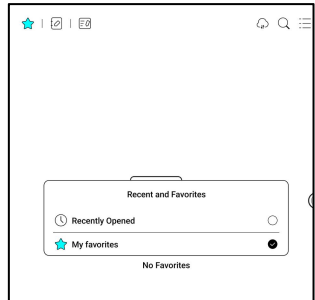
Local Notes: All notepads created in Notes app

Reading Notes: notes from Split-view in NeoReader



## My Favorites

Tap the ☆ symbol on the Notepad cover to add to your Favorites. Tap Recently Open icon to switch to My Favorites;



The old “Pinned” function was removed;

## ONYX Cloud Sync ( In Bulk )

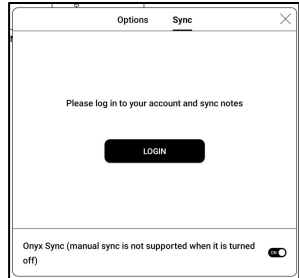
After Onyx account is logged in, the sync function is on by default.

When you open an existing notepad, notes will be retrieved from the cloud. When you close a notepad, notes will be synced to the cloud. The notepad list and content are synced respectively. It may take longer to sync the notepad content. Please wait and check until the sync is completed. Check synced notes at BOOX Assistant app or [push.boox.com](https://push.boox.com).



## Sync individual notepad

Long press a notepad cover to pop out Property dialog box for checking sync status. Tap the Sync icon to resync if there is a sync issue. You can turn off the sync function for individual notepad. You can also turn off the sync function of all notepads from Sync Settings in the menu.



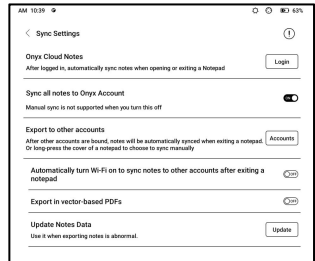
## Menu

Here includes Create a Folder, Manage in bulk, Sort by, List Mode/ Cover Mode, Sync Settings, Options, and Recycle Bin.

# Sync Settings

## ONYX Cloud Sync

After you log in to Onyx account, the notes will be automatically synced to Onyx Cloud when you open and close a notepad.



Or you can tap the Sync icon on the Toolbar to manually sync notes. If you do not want the sync function. You can turn it off from Sync Settings.

## Sync to other accounts (export)

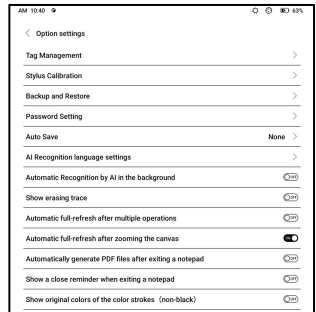
After you bind a third-party sync app to your BOOX, the notes will be automatically synced to the app when you close a notepad.

The 3rd-party app sync is one-way export. You can export your notes in PDF or PNG to a 3rd-party app, but you cannot sync the notes back to your BOOX. No need to log in to your Onyx account.

## Options

This covers general settings for notes, including Stylus Calibration, Backup and Restore, AI Recognition language settings, Password Settings, Show erasing trace...

etc.



## Backup and Restore

You can back up and restore your notes locally. Cloud backup is not supported.

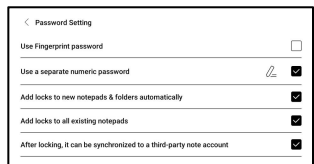
**You can restore the backup data, but restoring the backup data will overwrite the current data. Please perform this carefully.**

## Password Settings

This password is only applicable to notepads in the Notes app.

The password does not follow notepads. Individual notepads cannot have separate passwords.

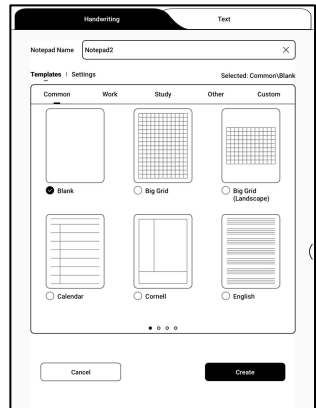
When a password is set, it is applicable to all notepads. You can remove the password for individual notepads and also lock the notepad with the set password again.



When using a separate numeric password, you can choose to add locks to new notepads automatically. If you untick this option, the newly created notepad will not be locked with the set password. You need to add the lock manually. When a notepad is protected with a password, its cover does not show a thumbnail view of your notes. You can long press a notepad cover to pop out Options to add a lock to the notepad or unlock it.

## Create Notepad

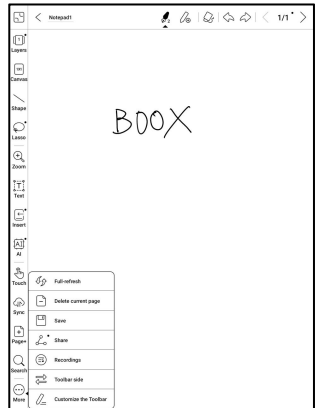
When creating a new Notepad, you can select Notepad type, modify the notepad name, choose a template, set the scaling method, and whether to apply the template to all pages. You can only create a Notepad after confirming all settings.



## Handwriting Notes

When you exit a notepad, your notes will be automatically saved. You can also manually save your notes while you are still taking notes.

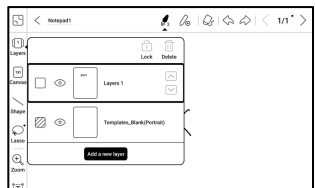
Tapping the page number, you can choose to jump to other pages.



You can customize the side Toolbar to your own preference. The toolbar on the top does not support customization.

## Layers

This supports a template layer and another 5 custom layers. You can hide, lock layers and adjust the layer orders. The

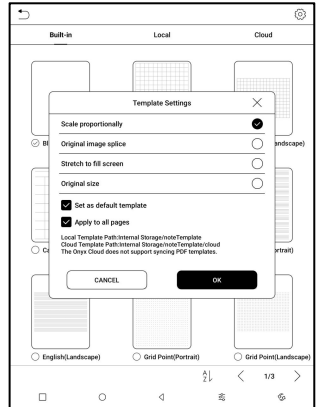


hidden layers will not be shown in an exported document

and will not be recognized by AI Conversion. When a layer is locked, it does not support any editing.

## Templates

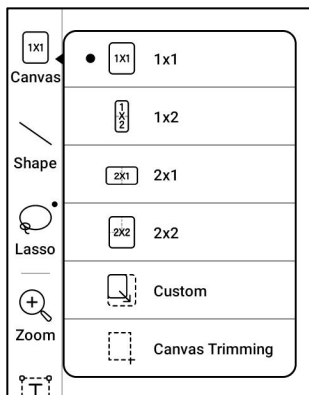
A template can only be added to the Template layer, which cannot be deleted. Template settings include Scale proportionally, original image splice, stretch to fill screen and original size. You are recommended to start writing after determining which template to use to avoid notes misplace if you change the template after you start writing.



## Canvas

The default canvas size is 1x1, the same as the screen size.

You can adjust the canvas size to 1x2, 2x1, or 2x2(max), or customize the canvas size by dragging the canvas.



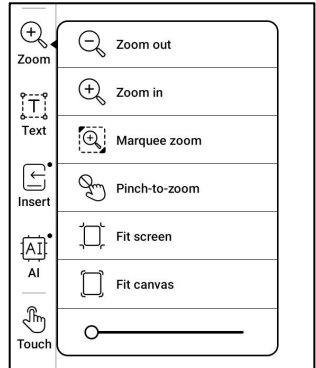
Using the upper left corner as the base, you can extend the canvas by dragging the canvas left or downwards. When you switch from a big canvas to a small canvas, your handwriting outside the canvas area will not be displayed but will be kept.

When you switch to the big canvas, you can see the hidden notes again. Canvas Trimming is to automatically crop the blank part of the canvas by the stroke on the edge of the visible layer.



## Fit Canvas and Fit Screen

When the canvas size is larger than 1x1, you can choose Fit screen or Fit canvas under Zoom in the toolbar to view your notes.



### Fit canvas

The canvas will automatically expand to fill the screen.

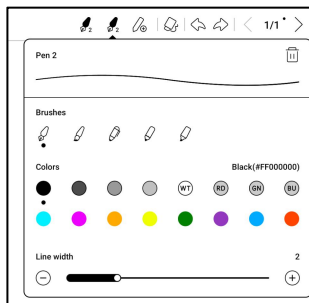
When it is larger than the screen, you can long-press the canvas and drag it to view hidden notes.

### Fit screen

The canvas is zoomed out to fit the whole screen. The grey area is not writable.

## Brushes

Support up to 5 pinned brushes. You can preset the types, colors and line width of the pinned brushes. Tap any pinned brush to expand more settings of the brushes.

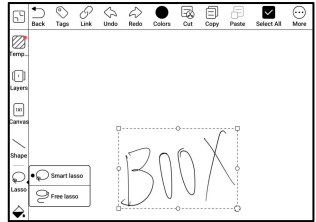


## Eraser

When using Mobile Eraser, Stroke Eraser, and Lasso Eraser, you need to switch back to brush to continue writing. When you choose to erase all notes, it automatically switches back to brush.

## Lasso

There are two types of lasso tools: Smart Lasso and Free Lasso. You can use the lasso tool to select certain content, and then manage, such as add tags, change colors, copy, cut, delete, zoom, move...

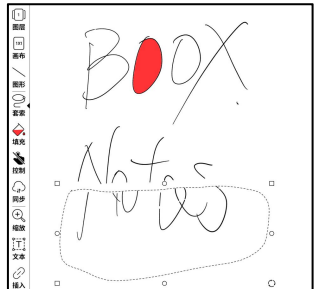


## Smart Lasso

It will automatically extend the selection area based on the strokes of the selected content.

## Free Lasso

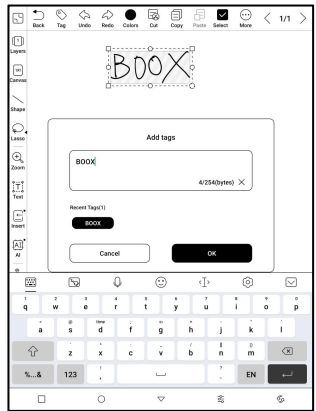
Only select the actual selected area



# Tags

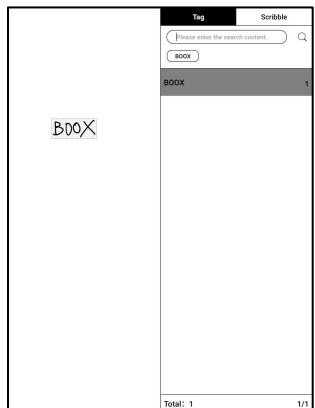
You can use the Lasso tool to select any notes and add tags, which can add identifiers to the selected notes for search recognition.

Each selected content can be added up to 5 tags. Images, shapes, recordings, and other attachments do not support adding tags.



## Search tags

The search list shows all tags by default. You can view certain tags by filtering.



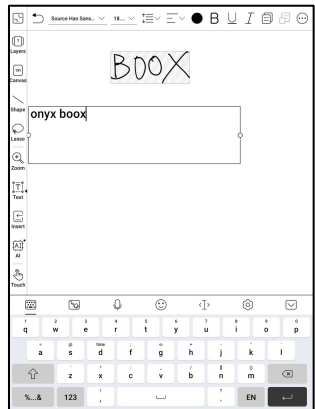
## Tag Management

The tag is a global feature and all notepads share the same tags. Go to Options/ Tag Management to check all tags.

When you delete a tag, the corresponding notes will not be deleted.

## Insert text

In inserted text mode, you can use keyboard to type. The text box can be moved around. You can change the font size and line spacing, embolden fonts, underline, italicize, and delete text.

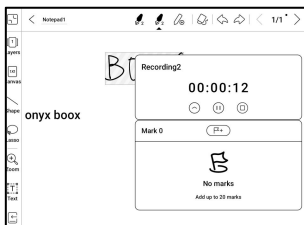


## Insert other attachment

You can insert recordings, images, attachments, links to another page within notepad, and links to external websites.

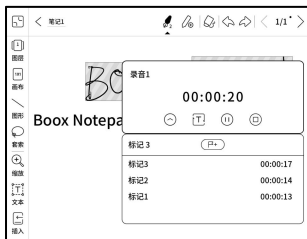
## Insert Recorder

During recording or playing a recording, you can add marks .



## Recording marks

You can add marks to recordings while you are recording. Tap each mark and jump to the corresponding location.



## Insert pictures

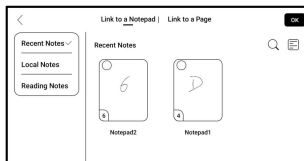
You can insert local picture, move, zoom and copy the inserted images. Use lasso tool to select an inserted picture and edit it again.

## Insert attachments

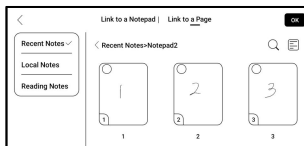
Insert an attachment up to 20MB. The inserted attachments can be synced to Cloud along with the notepads.

## Insert a link to a page

Under Insert icon, you can add links to Notepads, Files, and Websites.

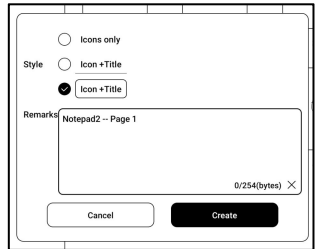


When adding a link to a page, you need to select a notepad or a file first. Only PDF document



supports Link to a Page.

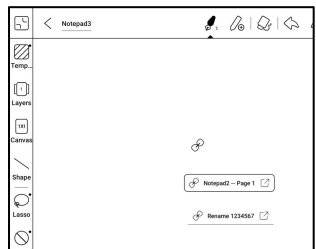
When the link style is set to "Icon only", users need to tap twice to access the linked page – the first tap is to display the link's title, and the second tap is to



direct to the linked page. This design is intended to prevent accidental tap to access the linked page.

When the link style is set to "Icon + Title", users can simply tap on the rightmost "navigate" icon to access the linked page.

Users can long press the link icon or title to drag and adjust its position on the page. Note that once a link has been added, it

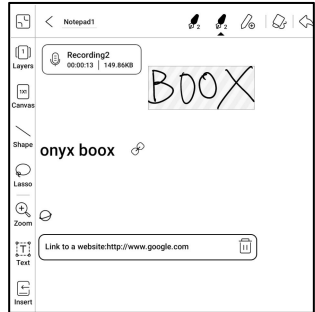




cannot be modified. To make changes, you need to delete the old link and add a new one.

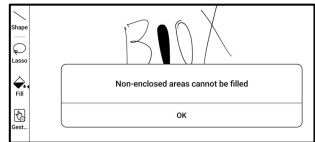
## Insert a link to website

You can insert a link to an external website. Tap the link to open corresponding website.



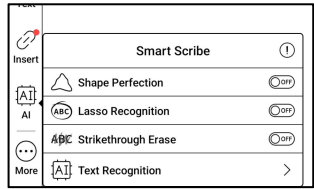
## Fill Colors

Color Fill is a new function added to the Toolbar. It can fill colors in an enclosed area.



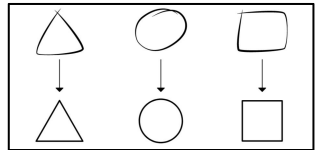
## Smart Scribe

It can intelligently convert some handwritten content into standard graphics, lasso selection, erasure, or text.



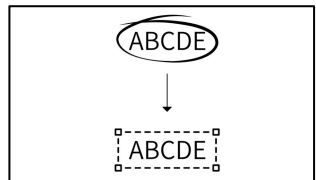
## Shape Perfection

Pause for 1 second on the screen after completing the shape drawing, then lift the stylus after the shape is perfected.



## Lasso Recognition

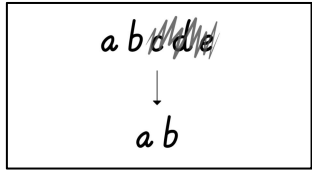
Draw a circle around any handwritten content without pausing. The circle will be



converted into a lasso selection. It is not applicable to a blank area.

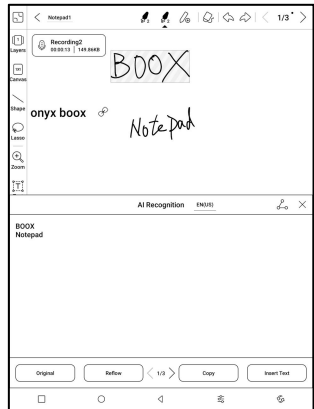
## Strikethrough Erase

Quickly draw vertical lines over any handwritten content, the content will be erased after you lift the stylus. It is not applicable to a blank area.



## Text Recognition

Convert handwritten notes into text. English and Chinese are available by default. Other languages require language package download.



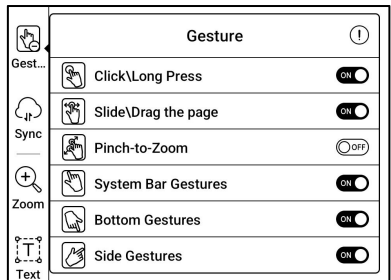
The converted text can be directly inserted into the current page.

You can choose either original layout or reflow layout to convert all handwritten notes on the current page.

AI converted content is synced based on the original handwritten content. If handwritten content is changed, the content will be re-converted when you start another conversion.

## Gesture

To avoid interference with handwriting caused by accidental triggering of edge gestures when your palm moves along the edge of the screen during



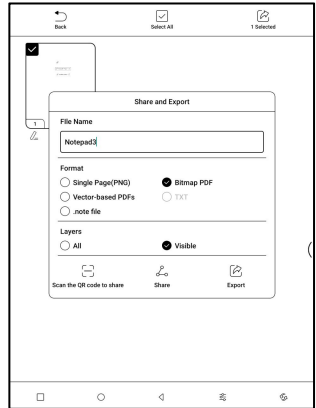
writing, you can disable certain gesture functions in the Toolbar-Control.

For models with physical buttons, the button function can also be disabled. Please refer to the specification of the product.

## Share and Export

Inside a notepad, you can select specific pages to share or export.

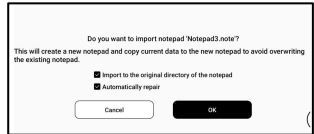
On Notes homepage, you can share the entire notepad by long-pressing its cover. Here you cannot select specific pages to share or export.



The .note format, which contains the original data of a notepad, can be exported and sent to other BOOX devices. You can continue using and editing the notes after a .note file is imported to another BOOX device.

## Import .note notes file

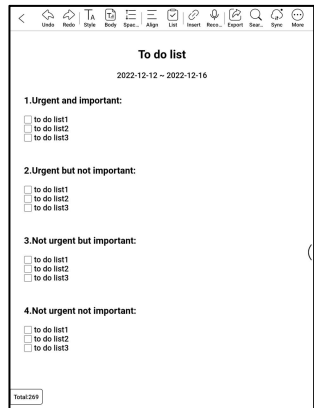
In the Storage, you can tap on a .note file to import it as a new notepad, which can be further edited.



When importing, you can choose whether to keep the original directory of the notepad. It is recommended to choose "Automatically repair" to ensure that the imported data is displayed correctly.

## Text Notes

Text Notes supports text input and allows you to adjust formatting, insert recordings, attachments, and perform other operations, but it does not support direct handwriting input using a stylus.



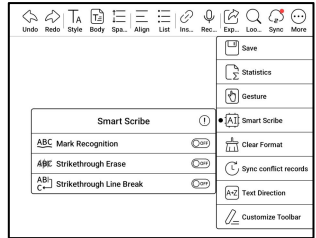
When creating a text notepad, you can choose a template.

Within the notepad, you cannot select or modify the template. If you need to adjust the template, it is recommended to clear the formatting using the "Clear Format" option in More menu, and then manually set the desired style.

A single text notepad supports up to 5000 English words.

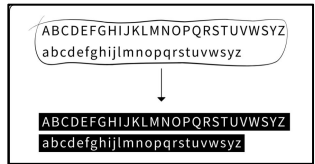
## Smart Scribe

It can intelligently convert marks into highlights, erasure, or line breaks.



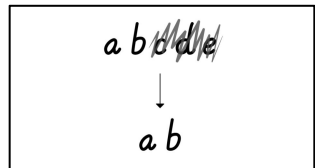
## Mark Recognition

Drawing underlines or circles over text will be directly converted into highlights.



## Strikethrough Erase

Quickly draw vertical lines over any handwritten content, the content will be erased after you lift the stylus. It is not applicable to a blank area.





## Line Breaks

Draw a vertical line (divider) at where you want a line break.

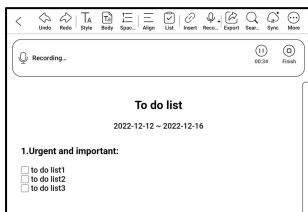
The text behind the divider will be moved to the next line.

Draw a vertical line (divider) at the beginning or end of a line in multiple-line text. Two lines will be merged into one.

## Recorder

Each notepad can insert one recording, which is fixed at the top of the notepad.

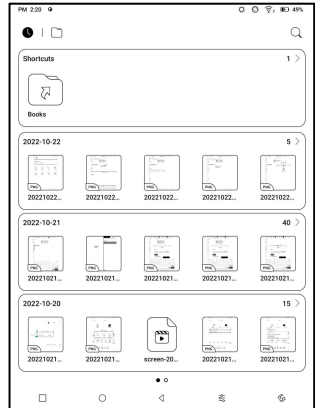
After finishing a recording, you can continue recording if needed.



## 5.5 Storage

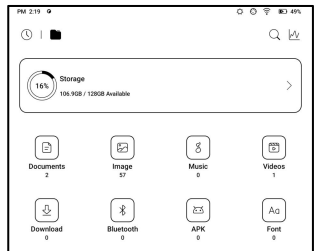
### Recent Files

Here includes Shortcuts and recent files. The recent files are sorted by time in descending order by default and grouped by date automatically.



### Storage

Here includes the storage path and document categories. All files are sorted automatically into different categories by type, but the files' original storage location does not change.



## OTG External Flash Drives

This device supports Type-C

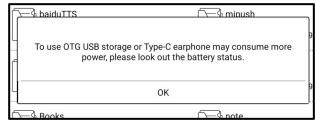
OTG flash drives. After a flash

drive is inserted, the flash drive

will be automatically recognized and loaded as a storage.

OTG devices require a power supply and will increase

battery consumption



## Low storage warning

Please make sure of leaving at least 300MB of storage for

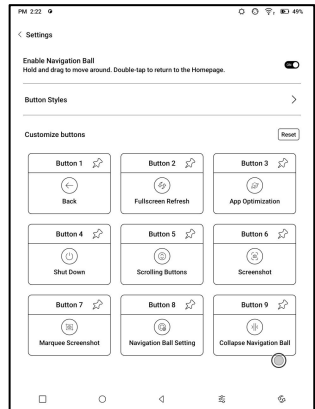
normal system running and relevant data storage. When

the storage is lower than 300MB, the system bar will show

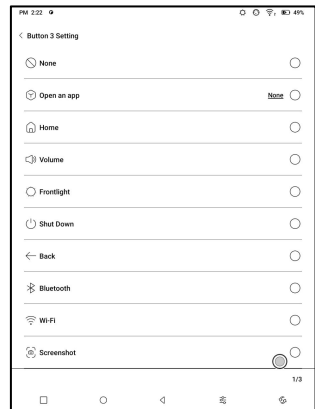
a warning icon for “insufficient storage” .

## 5.6 Navigation Ball

Tap the Navigation Ball to expand or contract it. Its default display style is fan-shaped. You can change to other styles (Horizontal Style and Vertical Style) from the settings. You can also set its opacity by percentage. You can pin any buttons which will always show on the top.

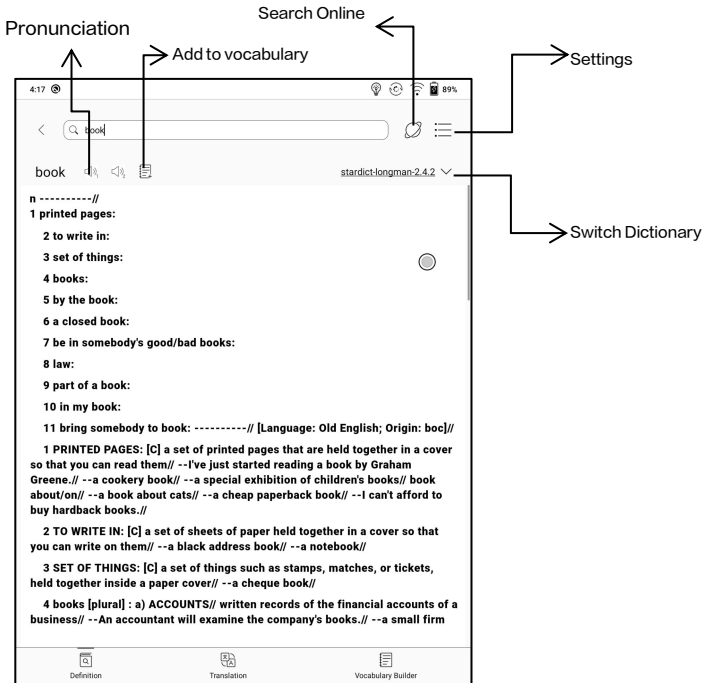


You can customize each button's function. The available functions include some system functions, switching apps, and app optimization.



## 5.7 Dictionaries

When you open Dictionary for the first time and there is no dictionary installed, there will be a notice to lead you to local downloads, which require a Wi-Fi connection. Word pronunciation requires dictionaries with voice files and TTS is currently not supported.



You can import your own dictionary files and save them to the designated storage path: sdcard\dicts\XXX;

Each dictionary has a corresponding folder. For example, dicts\Advanced Chinese Dictionary

In dictionary Settings/Preferred Dictionary Setting, you can check all available dictionaries. Up to 20 dictionaries are supported.

When there are dictionaries installed, you can search words in the search box. The lookup results are subject to the words included in the dictionary. If you cannot find a word, please change to another dictionary.

You can add found words to Vocabulary Builder to manage in bulk.

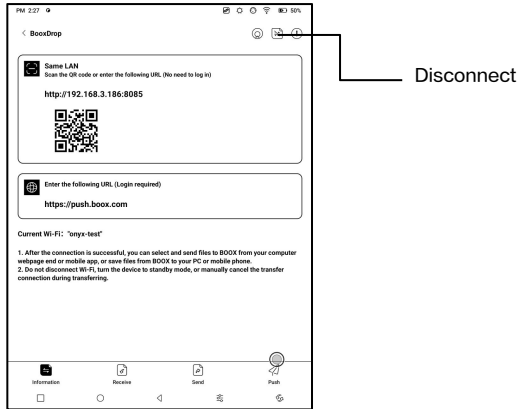
## 5.8 BOOXDrop

Connect your BOOX with a PC or a mobile phone. You can send files to your BOOX from PC or BOOX Assistant app, or saves files of your BOOX to your PC or mobile phone.

How to:

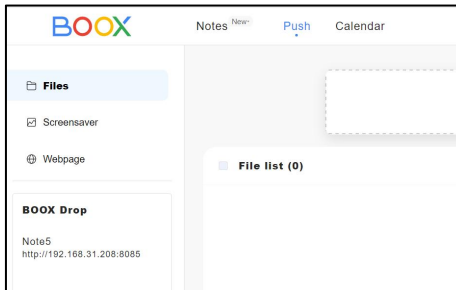
1. Open BooxDrop from Apps page or Control Center.
2. Open a browser on your PC
  - 2.1 No login required: Make sure your BOOX and PC in the same network. Enter the IP address shown on BooxDrop interface to your PC browser to connect.

BooxDrop does not disconnect automatically. If you want to disconnect it, please disconnect it manually or on BooxDrop interface.



2.2 Log in to Onyx Account: open push.boox.com.

You can see the connected devices and click any device to open.

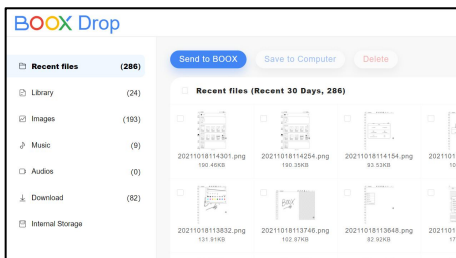




3. When you open a connected device, it will automatically recognize whether your BOOX and your PC are in the same network. If they are not in the same network, you can not open the page.  
Please change to the same Wi-Fi.
4. When the connection is successful, you can load all folders and files from your BOOX.
5. Send files to BOOX: You can select files on your PC and send to BOOX. All sent files are grouped into corresponding folders based on file formats.  
Recent files: all files are sorted by time and same as Storage/Recent Files  
Library: Books/xxx.epub (including all supported file formats)  
Image: Pictures/xxx.png  
Music: Music/xxxx.mp3  
Audios: Movies/xxxx.mp4  
Download: Download/xxx.xxx (Including

non-books, pictures, mp3, mp4, etc.)

Storage: Send files to the selected storage.



6. Save files to PC: when you select a file from your BOOX on your PC, you can choose a saving path to save to your PC.

## Push History

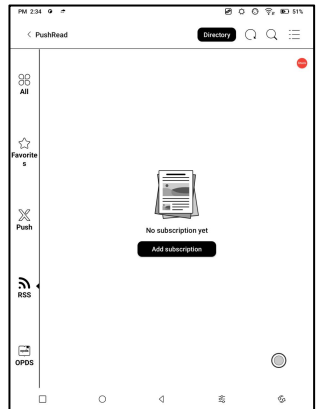
You can only see the Send and Receive history on your BOOX.

## 5.9 PushRead

Aside from Onyx Push, you can use RSS and OPDS in PushRead

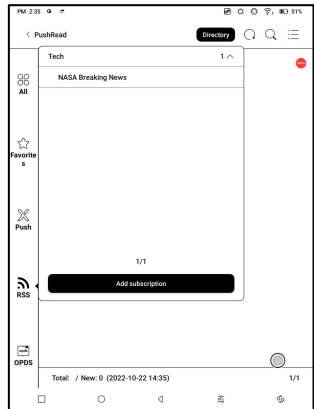
### Onyx Push

You can push webpages to your BOOX via Push in push.boox.com or BOOX Assistant, and read on your BOOX. If you use PushRead for the first time, you need to log in to the same Onyx account on both push.boox.com or BOOX Assistant and your BOOX.



## RSS\OPDS Subscription

You can add subscriptions from the public source list. You can also customize your RSS/OPDS subscription. You need to create a group for the first-time adding RSS subscription source so that the subscription source can be added to the relevant group.



The webpages in PushRead requires internet to load for the first time. After being loaded, it can be read offline.

The default layout is Web Mode (the original webpage' s layout). Tap the center of the screen to bring out the menu where you can switch to Reading Mode, change font size, and fully refresh the screen.

## 5.10 Calendar Memo

In Calendar Memo, it shows Today's Notes and Today's Read. Tap to open notes or books. You can add memo to each day and set the memo as screensaver. Please refer to Screensaver / Calendar Screensaver for settings.



Currently, the calendar memos do not support sync to cloud.

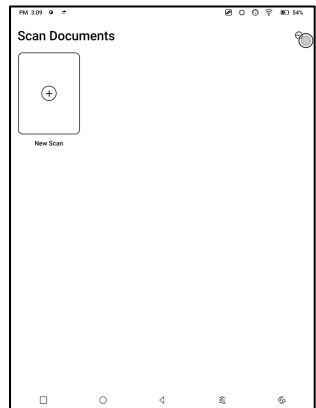
After logging in to Onyx account, you can email memos in PDF to a designated email address.

## \*5.11 DocScan

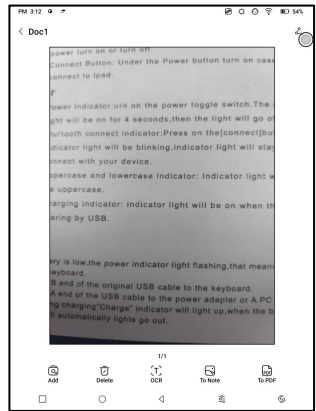
Only supported for models with cameras;

Support OCR to recognize the text content on the picture after the camera takes a picture;

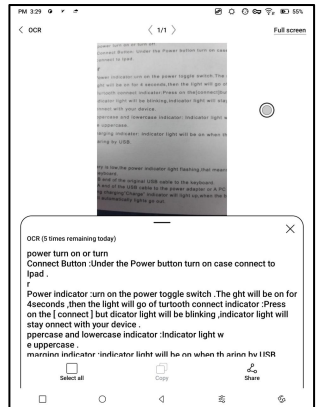
Select New Scan to enter the photographing interface;



After taking photos, enter the photo preview interface, where you can select OCR identification, PNG export, PDF export, etc;



The recognized text can be long pressed to copy, all selected to copy or shared directly;



## 6. System Settings

---

### 6.1 Onyx Account

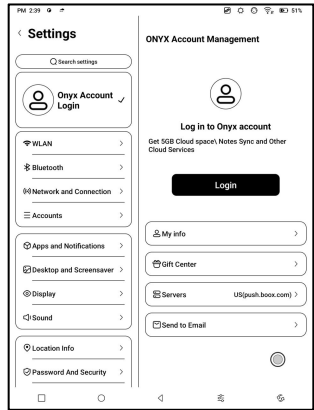
Support multiple accounts and switching between accounts.

You can switch between accounts from the account list.

Only account information is kept

After switching between accounts, you need to log in accounts again. If different

accounts use different servers, the servers will be switched when you log in to another account.



Associated accounts: After you log in to a main account, you can associate the main account with another two login methods. The three login methods share the same account. Mobile phone and E-mail support unbinding and Wechat does not support unbinding.



## **6.2 WLAN (WLAN)**

### **Wi-Fi Setting**

When you turn WLAN on, the device will search all available Wi-Fi. Choose the Wi-Fi you want to use, and enter required information such as password to connect to Wi-Fi. Or turn Wi-Fi on and off from Control Center. Add networks manually by tapping Add Networks.

### **Bluetooth Settings**

Turn Bluetooth on and search nearby available Bluetooth devices. Send connection request. Only when both devices are connected, Bluetooth will work.

### **Network and Connection**

Here includes Flight Mode, Hotspot and Tethering settings, App Data Usage, Screen Cast, Printing, VPN, and Private DNS.

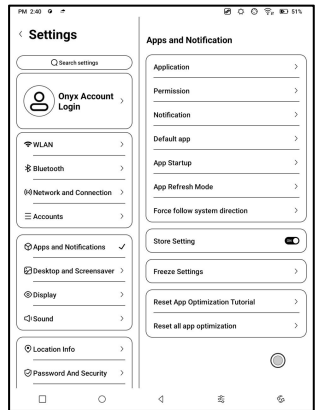
## 6.3 Accounts

### System Account

Here includes Google Account, Email App, etc.

## 6.4 Apps and Notifications

Here includes Application management, Permission management, Notification management, Default app, App Startup, App Refresh Mode, Store Settings, Freeze Settings, Reset App Optimization Tutorial, and Reset all app optimization.



## **App Startup**

Only for auto-starting apps. If enabled, it may increase memory usage and power consumption.

The app itself must have the function of monitoring system to automatically start up. After installing the APK, you need to manually open the app to run it once;

After the startup is successful, it only runs in the background and will not be displayed in the recent running tasks;

## **App Refresh Mode**

You can manage refresh modes of third-party apps in bulk.

## **Freeze Settings**

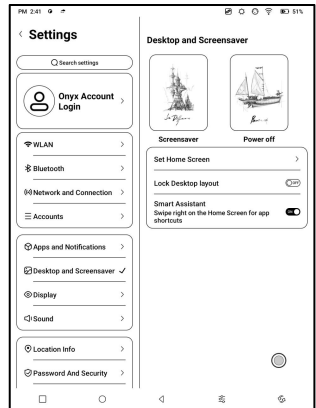
You can freeze third-party apps here. Freezing apps that are running in the background can reduce power consumption.

## Reset App Optimization Tutorial

When you open third-party apps for the first time, an App Optimization tutorial will pop up. If you want to see the tutorial again, please reset the App Optimization Tutorial [here](#).

## 6.5 Desktop and Screensaver

You can set Home Screen, choose to lock the desktop layout, and enable Smart Assistant. Only one power-off image can be used.



## **Screensaver**

Support Image Screensaver(default), Memo Screensaver, Clock Saver, and Transparent Saver. For Image Screensaver, when you select only one image, the screensaver stays static. When you choose more than one images, the screensaver will play all the images repeatedly.

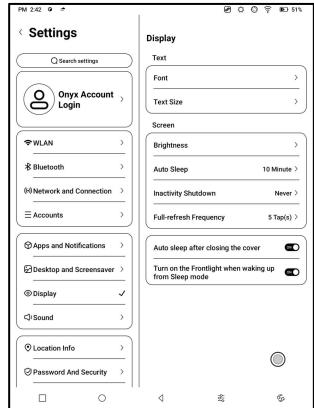
## **Power-off Image Setting**

You can set Power-off image along with settings including “Show text on power-off screen, Text Position, Image zoom method. (When image ratio is different from screen, the image cannot be used.)

## 6.6 Display

### Text

You can adjust the system font, font size. When you choose largest font, some interface text may be covered due to short of display space.



### Screen

You can adjust screen brightness, set Auto Sleep and Inactivity Shutdown time, and set full–refresh frequency.

## 6.7 Sound

You can set volume, ringtone, mute, and Do not disturb.

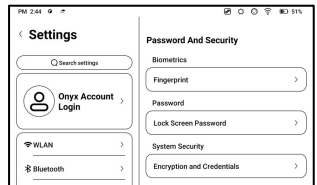
## 6.8 Location Info

You can enable “Access my location information” , and “Location Permission.

## 6.9 Password and Security

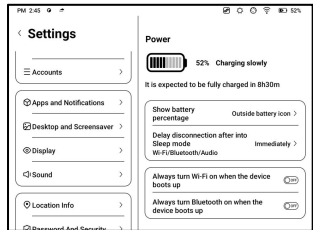
Support 6-digit Lock-Screen password,

Android 11 does not support resetting password. Please keep your password safe.



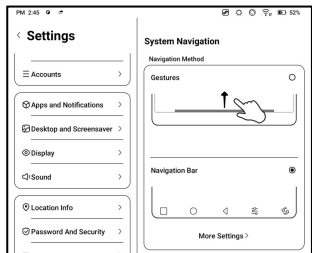
## 6.10 Power

You can check battery usage and choose whether to delay disconnection after your device goes into sleep mode, whether always to turn Wi-Fi on when the device boots up, and whether always to turn Bluetooth on when the device boots up.



## 6.11 System Navigation

You can choose system navigation method, either by Gestures or by Navigation Bar. There are 3 bottom gestures and 2 side gestures for Gesture method. There are two combinations of navigation buttons for Navigation Bar.





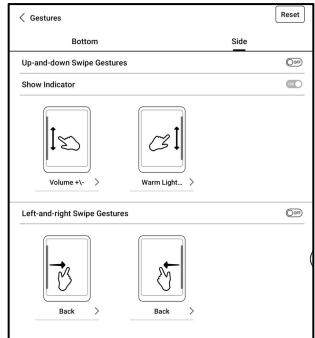
## Side Gestures

The Up-and-down Swipe Gestures are used to adjust Brightness, Volume, etc. by dragging the slider up and down.

The Left-and-right Swipe

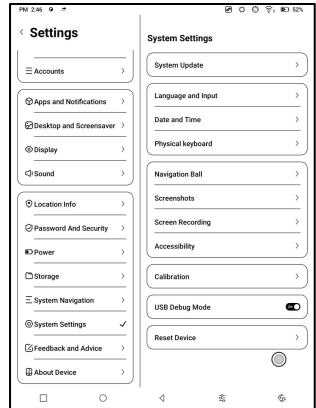
Gestures are used to perform custom functions by swiping inward from the sides.

This Gesture may overlap with turning pages by swiping left and right. So, it is recommended to choose suitable gestures based on actual needs to avoid affecting the main gestures use.



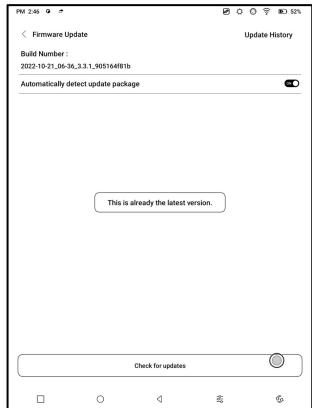
## 6.12 System Settings

Here includes System Update, Language and Input, Date and Time, Navigation Ball, Screenshots, Screen Recording Accessibility, Calibration, USB Debug Mode, and Reset Device.



### System Update

By default the system will check update package locally first, then check from cloud. If a firmware update is detected, it will be downloaded automatically. Download can be paused in progressing, and resumed later.



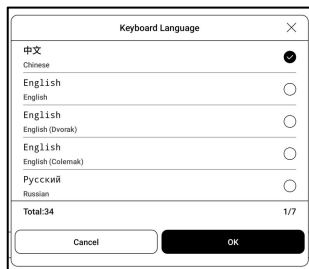
When an update package is downloaded successfully, you need to manually choose whether to update your BOOX.

**Before updating, please ensure 20% of battery and enough storage space.**

## Language and Input

### Onyx Input

Support switching between different languages. Please refer to the Keyboard Settings page for the supported languages.

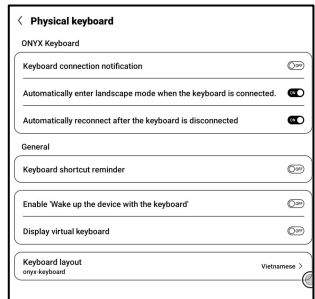


When an external keyboard is connected and the device detects the keyboard, a



configuration option for the physical keyboard will appear in the Notification Centre. Tap the notification to enter the keyboard settings page.

You can change keyboard layout manually for the external keyboard.

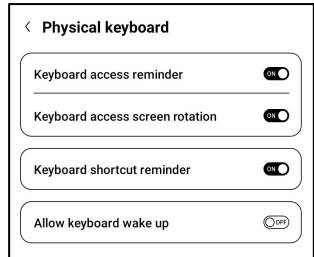


## ONYX Keyboard

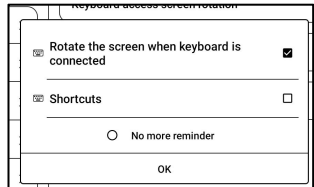
Support keyboard input, handwriting input, and voice input. You can activate it when using it for the first time. Chinese system uses Chinese handwriting input by default. Other languages use English handwriting input by default. Other languages require downloading relevant language package.

## Physical keyboard

Only the pogo-pin interface Cover keyboard provided by ONYX is supported (purchased separately);



When the keyboard is connected, the device will automatically rotate to the horizontal screen mode and



prompt whether to display the prompt pop-up window for shortcut keys. You can turn it off without relevant prompts;

## Date and Time

You can choose to set time manually or automatically.

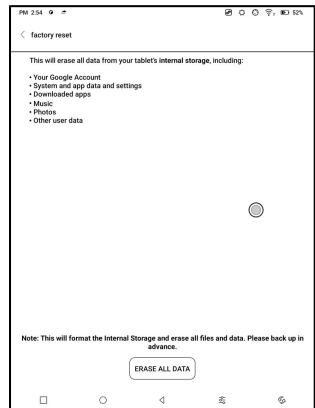
When your device is connected to internet, the system will set time automatically according to internet time.

**Note:** In order to ensure normal server connection of third-party apps such as Kindle, you are recommended to set time automatically according to internet time.

## Reset Device

**Note:** when resetting device, you will clear all user data.

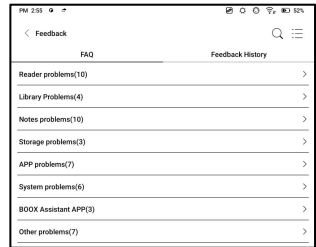
Please back up your data in advance and operate this carefully.



## 6.13 Feedback and Advice

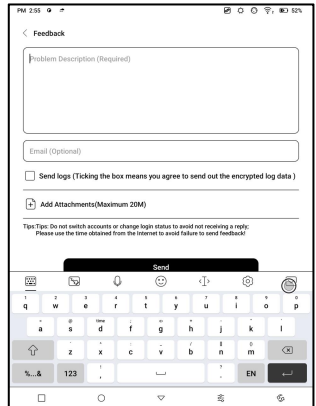
### FAQ

Here contains those frequently asked questions. If you have any questions, you can find the relevant questions here.



### Feedback

You can add attachments such as documents or pictures to your feedback, which will help us quickly locate the problems. When the device is turned off, the feedback history will be cleared. If you do not want the history cleared out, you can go



to Settings to enable “Save logs to local storage before rebooting the device. This option will collect relevant logs which will help us to evaluate the issues. We will not disclose any relevant information of your device. If you have any doubt, you can untick “Send logs” .

## **6.14 About Device**

This contains device information such as device model and name, firmware version, MAC address, electromagnetic touch version, capacitive touch version, etc.

## **7.Thank you for your support**

---

Thank you very much for your support. More product-related information can be found on our official website: [www.boox.com](http://www.boox.com)

If you have any questions, please contact us by email: [support@boox.com](mailto:support@boox.com)